

## Polk County Schools Head Start 2020-2021 Annual Report

The Polk County Board of Education Head Start met the challenges of 2020-2021 and supported our Head Start children and families.

In August Of 2020, Prek-Grade 5 returned to school 5 days a week under North Carolina DHHS and CDC guidance. Families were given the option to continue in remote services but we were fortunate most families chose to return in person. Throughout the entire time of COVID-19 we have maintained our funded enrollment of 80 Head Start children.

With the continued support of Polk County Schools and our community partners, we are serving Head Start children with successful outcomes.

### Results of the Most Recent Review by the Office Head Start

The Administration of Children and Families (ACF) conducted a Focus Area Two Monitoring Review in January 2018. The program was found to be in compliance with all requirements applicable to the Head Start Performance Standards, laws, regulation, and policy requirements.

2020-2021 Preschool Funding Sources	
Head Start	\$759,044
NC PreK	\$518,761
Title I	\$46,557
Tuition/Local	\$ 132,033
PRC 063 State DD	<u>\$ 19,322</u>
<b>TOTAL</b>	<b>\$1,474,020</b>

2020-2021 Head Start Expenditures	
Salaries/Benefits	\$625,246
Operational Expenses	\$119,587
Training/Tech Assist	<u>\$12,827</u>
<b>TOTAL</b>	<b>\$757,660</b>

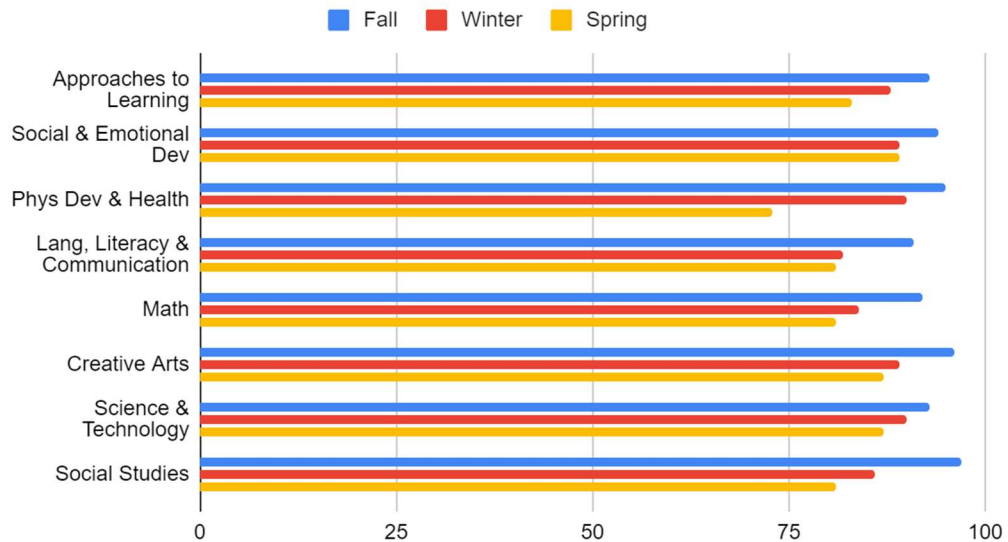
2021-2022 Head Start Budget	
Salaries/Benefits	\$666,333
Operational Expenses	\$137,623
Training/Tech Assist	<u>\$12,827</u>
<b>TOTAL</b>	<b>\$816,783</b>

**Audit:** An unqualified opinion was issued for 2020-2021 by Anderson, Smith, and Wike, PLLC, Certified Public Accountants. There were no federal findings or questioned costs.

Enrollment and Medical
<ul style="list-style-type: none"> <li>• 77% Children with Dental Exam</li> <li>• 99% Children with up-to-date Medical</li> <li>• 22% Children with IEP</li> <li>• Funded Enrollment: 80</li> <li>• Children and Families served:88</li> <li>• 100% Eligible Children Served</li> <li>• 92% Average monthly attendance</li> </ul>

Family Engagement/Parent Involvement
<ul style="list-style-type: none"> <li>• Family Engagement through each teachers and school</li> <li>• Family Math and Literacy Night 2x's a year</li> <li>• Ready Rosie</li> <li>• School Family Engagement activities 4x's a year along with daily interaction at the class level</li> <li>• Newsletters from teachers</li> <li>• Pertinent information about help for families through Child Plus and individual contacts</li> <li>• Communication through Kaymbu, phone calls, notes to parents</li> </ul>

## Fall, Winter and Spring



### School Readiness

- High Scope curriculum
- Teaching Strategies Gold assessment
- NC Foundations for Early Learning & Development
- All of the above aligned with HSELOF

### Transition

- *Into program*
  - Year-round application & enrollment process
  - Initial home visits by teachers (Virtual visits were conducted because of COVID)
  - Family visits to & observation of classrooms (Virtual visits were conducted because of COVID)
- *Into Kindergarten*
  - Spring & end-of-year parent conferences
  - As a public school program, seamless transition from PreK to K, especially as regards paperwork/registration
  - Children visit K classrooms, cafeteria, gym, library, etc. at end of school year (Due to COVID-19 unable to provide this transition activity during 20-21 school year)
  - Families given opportunity to visit K classroom prior to beginning of school year (Due to COVID-19 unable to provide this transition activity during 20-21 school year)